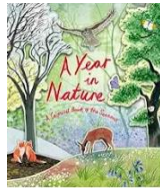


# What is monarchy?

## Texts to explore

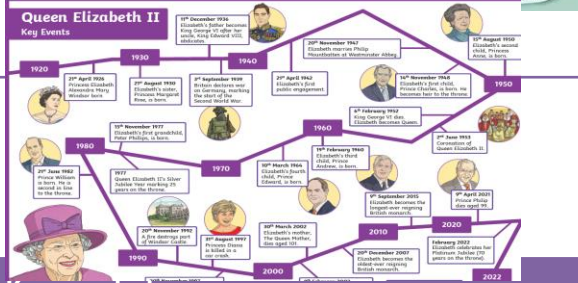
**A year in nature** – How do the Seasons effect the weather? This beautiful book explores this in our science lessons.



**Rapunzel** – the wicked witch has Rapunzel trapped in the tower but how does she escape?



**Queen Elizabeth** – a non-fiction book about the previous monarch of the British Empire. Her majesty was the longest ruler in British history and ruled for 45 years.

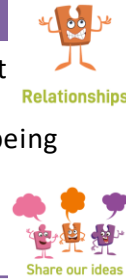


## Key vocabulary

- Monarchy** – head of state, usually king, queen or emperor.
- Queen** – a female ruler normally born into the role.
- King** – a male ruler who is usually born into the role.
- Royal** – having kings or queens in the family.
- Corgi** – a breed of dog loved by Queen Elizabeth with short legs and a long body.
- Palace** – where the king or queen usually lives
- Crown** – a decorated headdress worn by a monarch.
- Ruler** – the leader of a country.

## PSHE – relationships

Families – belonging, being different and belonging.  
 People who help us – community, being helpful.  
 Celebrating special relationships – appreciate, feelings, celebrate.



## RE: What makes a church special for Christians?

### St Mary's church visit



**Church** - a place of worship for the Christian faith  
**The Bible** – the book Christians read about their God.

## Music – your imagination

- Pulse** – steady beat in music
- Verse** – repeated section of a song
- Lyrics** – words to a song



### Listen and Appraise - Your Imagination



- Listen carefully.
- Perhaps close your eyes.
- You could move with the pulse.
- Use your imagination as you enjoy the music.

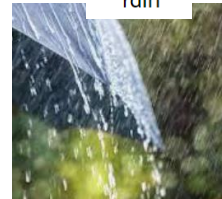
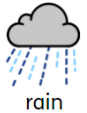
## IT – Digital writing

Exploring the keyboard.  
**Caps lock** – letters typed as capitals.  
**Space bar** – adds a space.  
**Keys** – buttons on a keyboard.



## Science

- Weather** – the state of the atmosphere we live in.
- Shadow** – a dark area or shape
- Rain** – moisture in the air
- Thermometer** – measures the temperature



**Seasons** - four where the weather changes depending on where the sun is positioned.

parts of the year, where the sun is